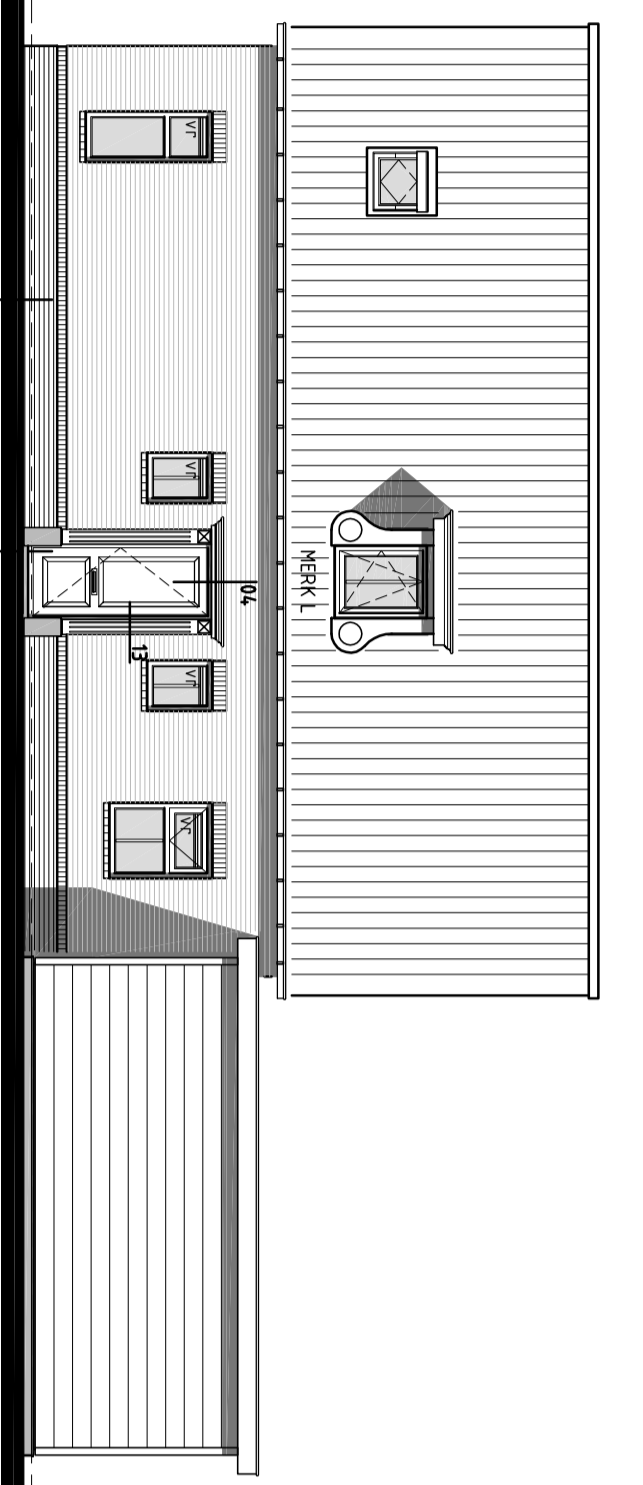
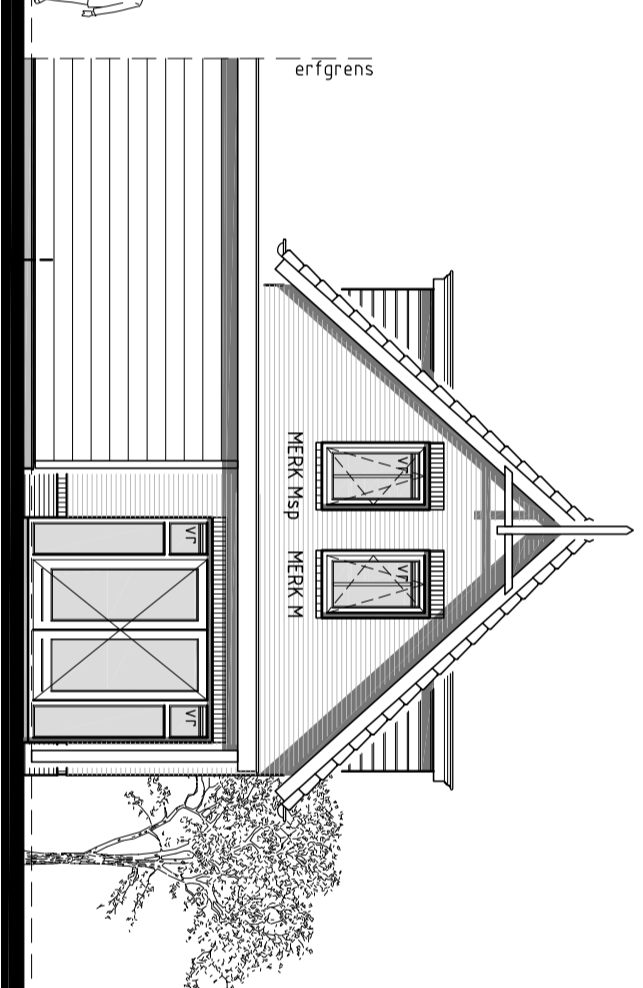


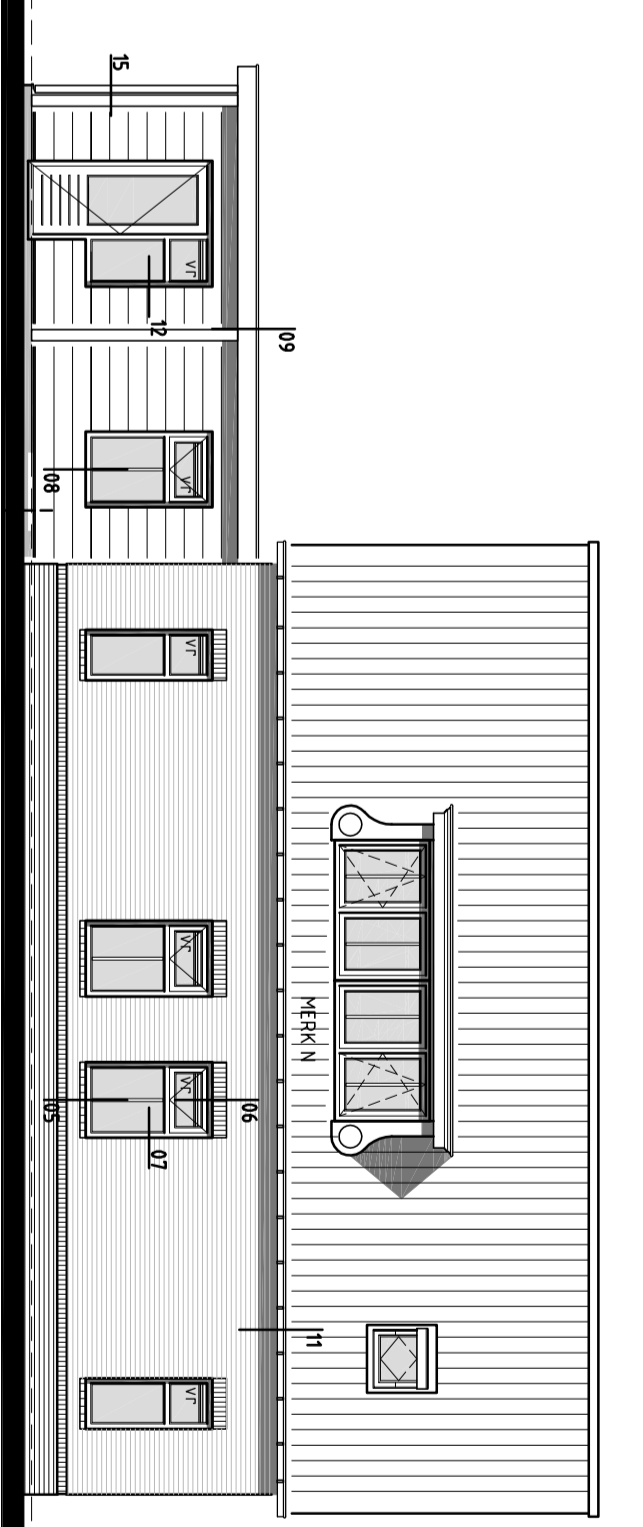
Voorgevel



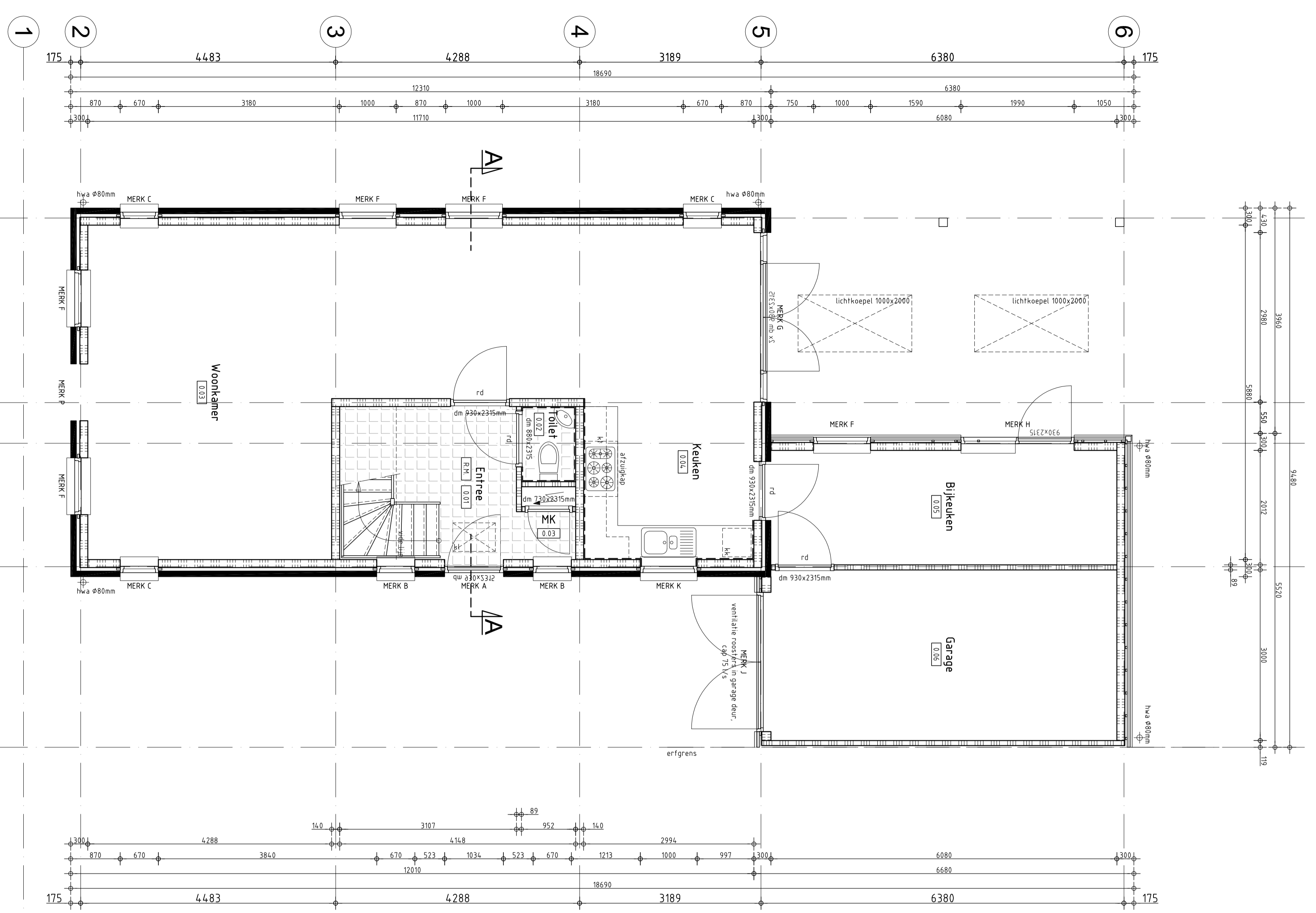
Rechter zijgevel



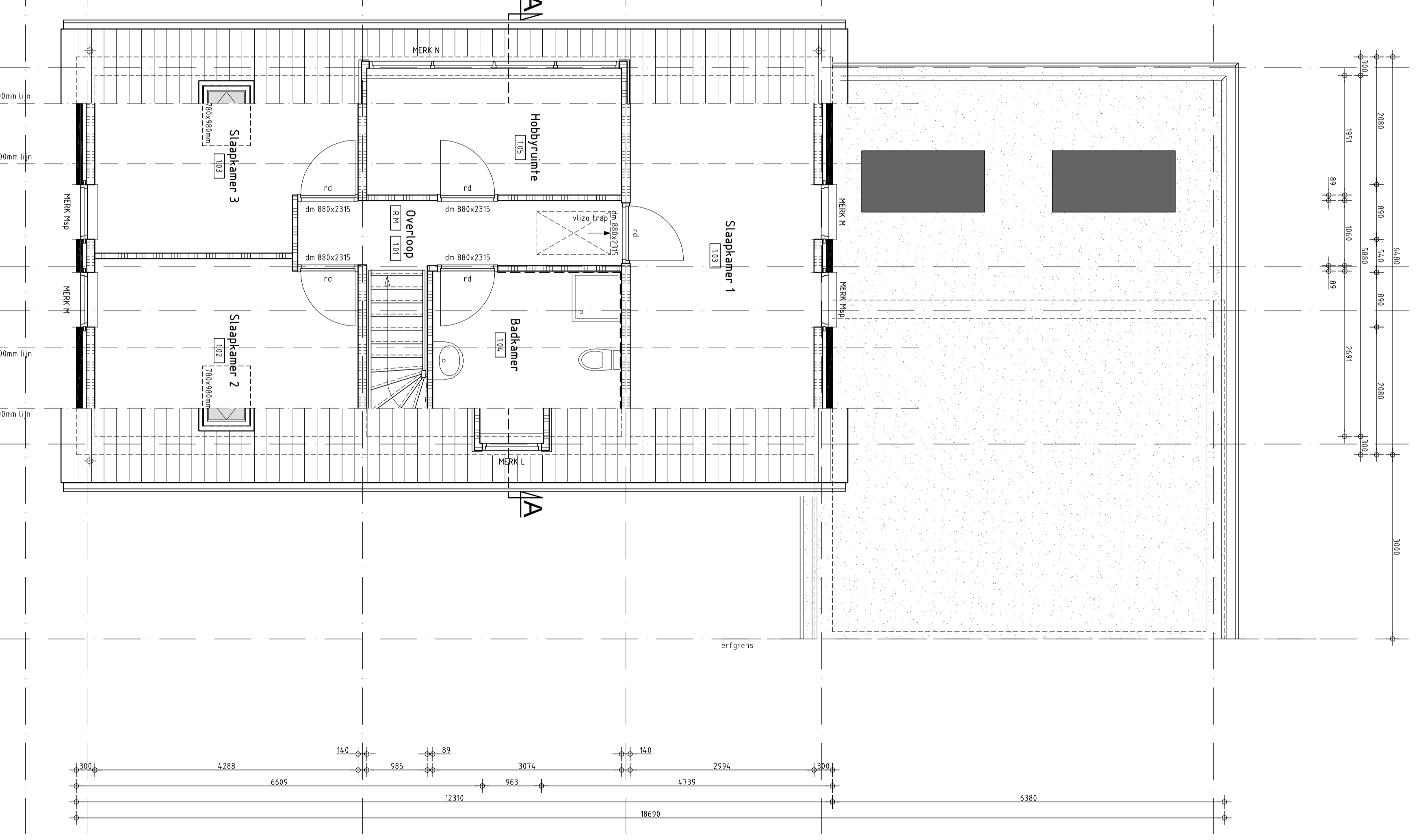
Achtergevel



Linker zijgevel



Plattegrond begane grond

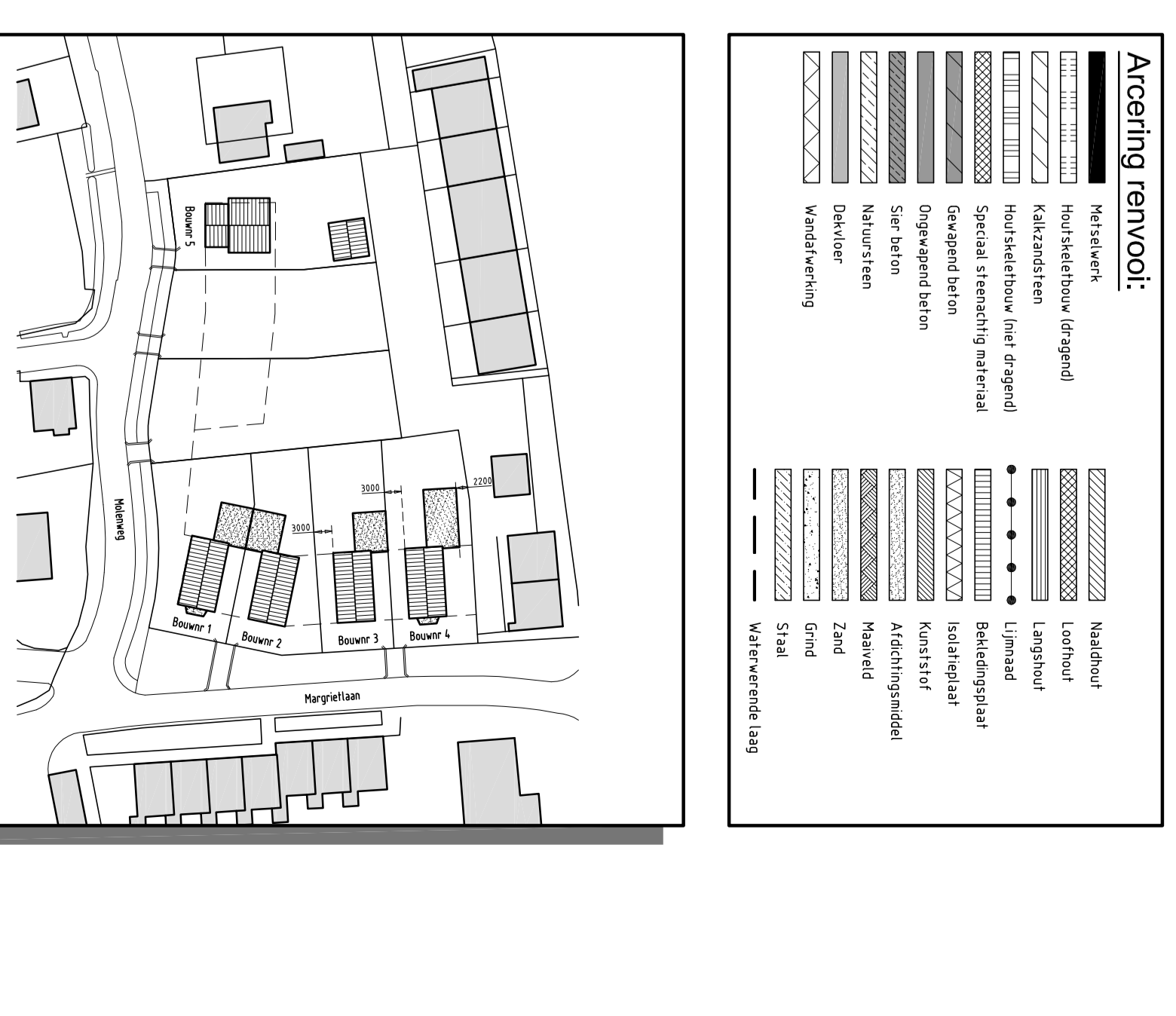


Plattegrond eerste verdieping

Symbolen rennovati: A set of symbols for renovation work, including items like 'Aanpak', 'Bijwerken', 'Verwijderen', 'Nieuw aanbrengen', and 'Behouden'.

Algemeen: Technische omschrijving: A section of technical specifications detailing materials and construction methods, including sections for 'Metselwerk', 'Dak', 'Buitenwanden', 'Binnenwanden', 'Deuren', 'Vloeren', 'Metselwerk', 'Dak', 'Buitenwanden', 'Binnenwanden', 'Deuren', 'Vloeren'.

Acroting rennovati: A table listing various renovation materials and their corresponding symbols, such as 'Nieuw aanbrengen', 'Bijwerken', 'Verwijderen', 'Nieuw aanbrengen', 'Behouden'.



Constructie gegevens: A table of construction details, including 'Metselwerk', 'Dak', 'Buitenwanden', 'Binnenwanden', 'Deuren', 'Vloeren'.

BESTEKTEKENING BOUWNR 6: A project information section containing the project name 'Nieuwbouw 7 Woningen Plan Keizerich Fase 2', the contractor 'Mantelbouw in het Werk BV', and other project details.

